

Hidden Gems of Mountain Park

(a.k.a. Hard to Find!)...Here's How



Truly Hidden Gems (a.k.a. Hard to Find!)...Here's How

A number of these are not listed on Google Maps and can be tough to find if you don't know about them. We've created this resource in hopes to help you enjoy all that the Mountain Park neighborhood has to offer! When parking on streets, we ask that you remain courteous of the neighbors and respect park hours so we can all continue to enjoy together!



Cellini Park & Play Area

Nearest address we suggest using to navigate to is: 20 Del Prado, Lake Oswego, OR 97035. Next to this home is a set of steps marked with a Mountain Park trail sign that leads up to the park.



Elizabeth M. Gress Park

Nearest address we suggest using to navigate to is: 220 Greenridge Dr, Lake Oswego, OR 97035. Next to this home is paved path marked with a Mountain Park trail sign that leads up to the park. Cross McNary and pickup the path on the other side.



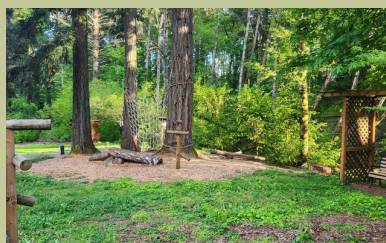
Brook Gutman Park

Nearest address we suggest using to navigate to is: 220 Greenridge Dr, Lake Oswego, OR 97035. Next to this home is paved path marked with a Mountain Park trail sign that leads up to the park. Cross McNary and pickup the path on the other side.



Nansen Summit Park

Nearest address we suggest using to navigate to is: 98 Nansen Summit, Lake Oswego, OR 97035. Across from this home is paved path that leads up to the park.



Preakness Park

Nearest address we suggest using to navigate to is: 99 Preakness Ct, Lake Oswego, OR 97035. The park is right across from this home and has walking paths marked with the Mountain Park trail signs.



Tanglewood Park

Nearest address we suggest using to navigate to is: 23 Tanglewood Dr, Lake Oswego, OR 97035. The path to the park is right between this home and from this home and 18 Tanglewood and is marked with the Mountain Park trail signs.



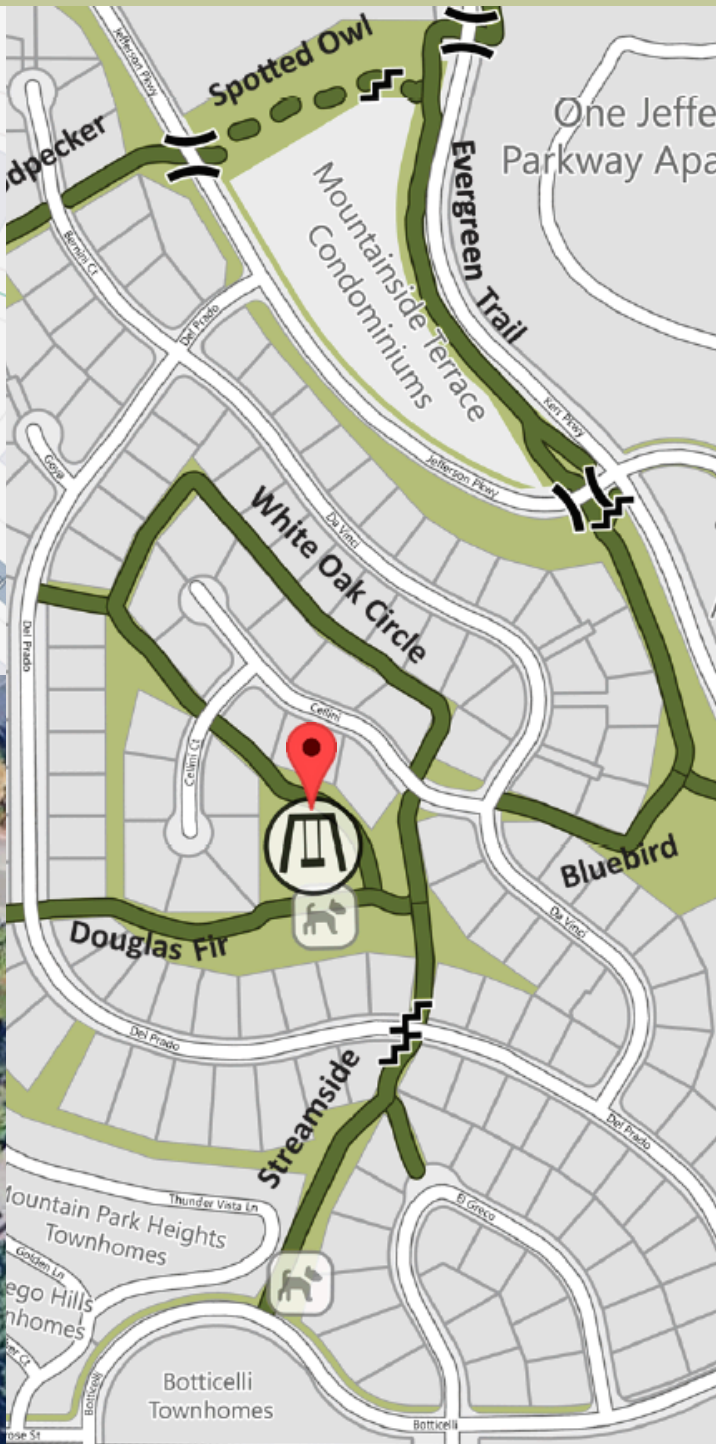
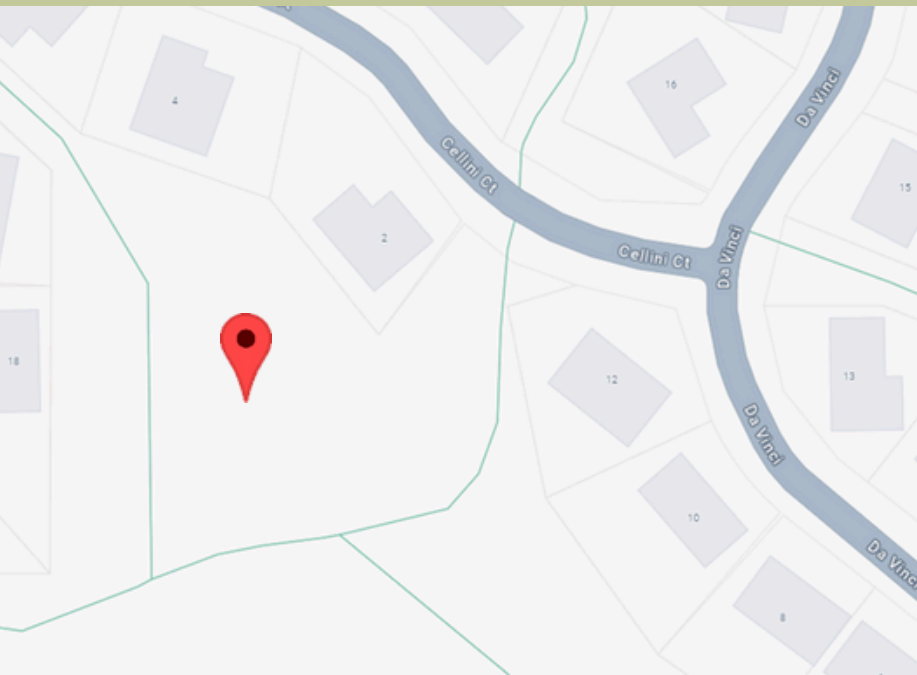
Touchstone Park

Nearest address we suggest using to navigate to is: 47 Touchstone Dr, Lake Oswego, OR 97035. The park is right across the street from this home and is marked by a "park hours" sign.

Cellini Park & Play Area

"The smallest, most intimate park, is hidden from street view, and only accessible by walking trails that meander from Del Prado, Da Vinci, and Cellini streets. It offers a children's play structure and picnic tables underneath towering evergreens."

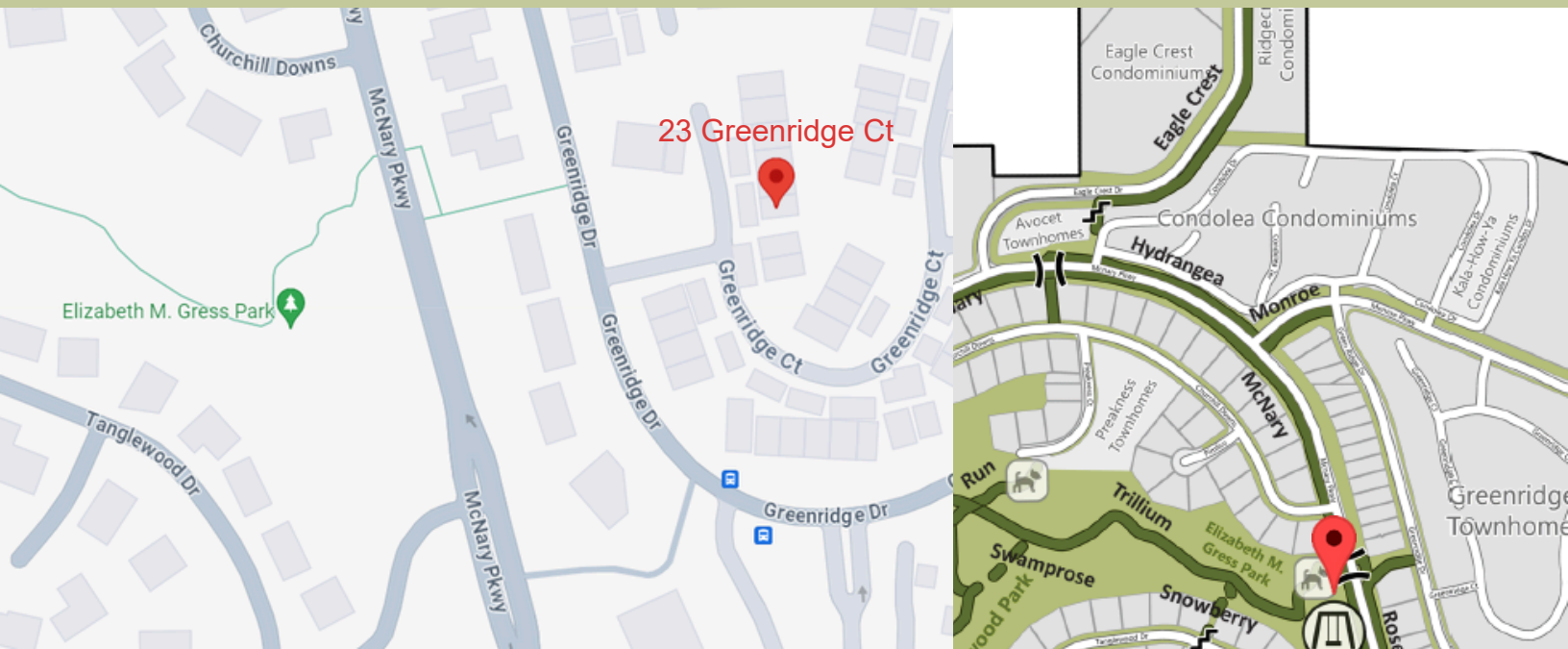
~ courtesy of Mountain Park HOA



Elizabeth M. Gress Park

"This park is located on the eastern side of the mountain bordered by Churchill Downs, McNary Parkway, and Tanglewood Drive. The park has a children's play structure, benches, and Springbrook Creek flows beside it."

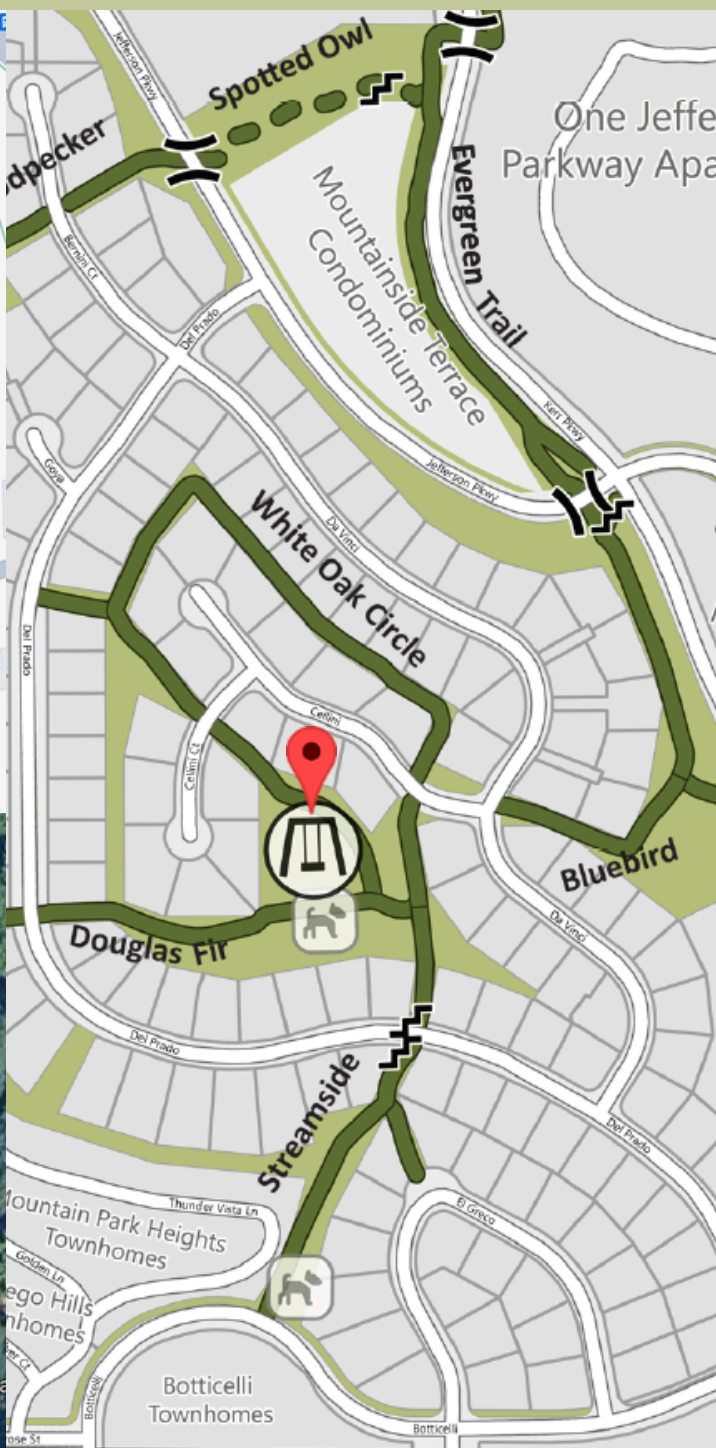
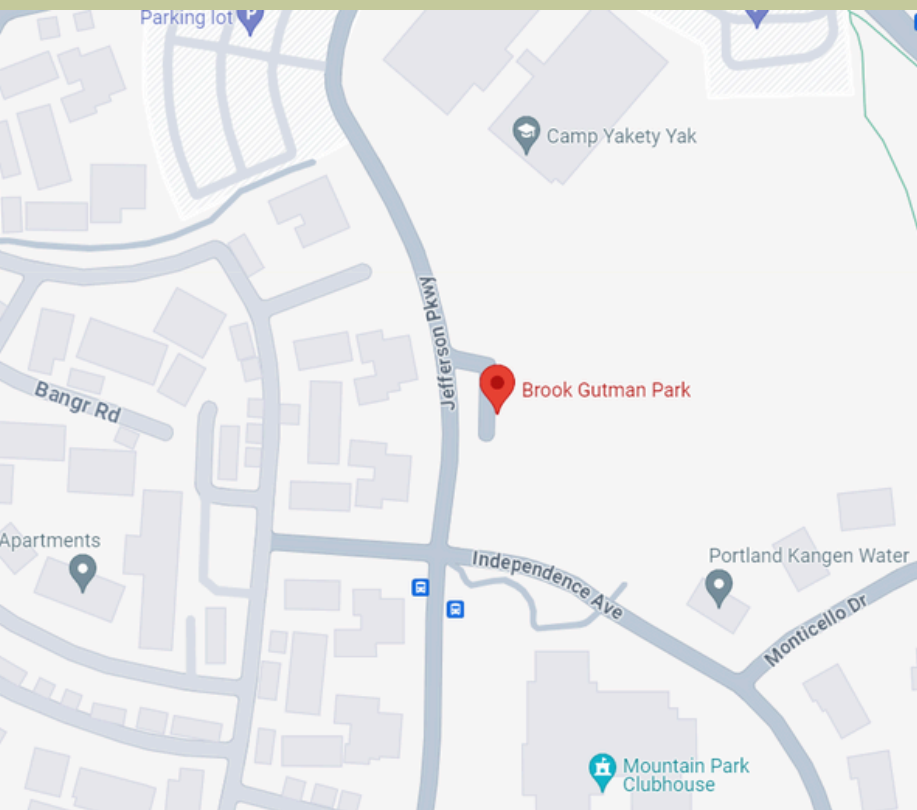
~ courtesy of Mountain Park HOA



Brook Gutman Park

“Located on Jefferson Parkway just north of the clubhouse, Brook Gutman Park is where the tennis courts are located. It also offers a grassy area and walking trails. The park is named after the association’s first landscape manager who worked for Mountain Park for more than 25 years and was responsible for care and design of the common areas.”

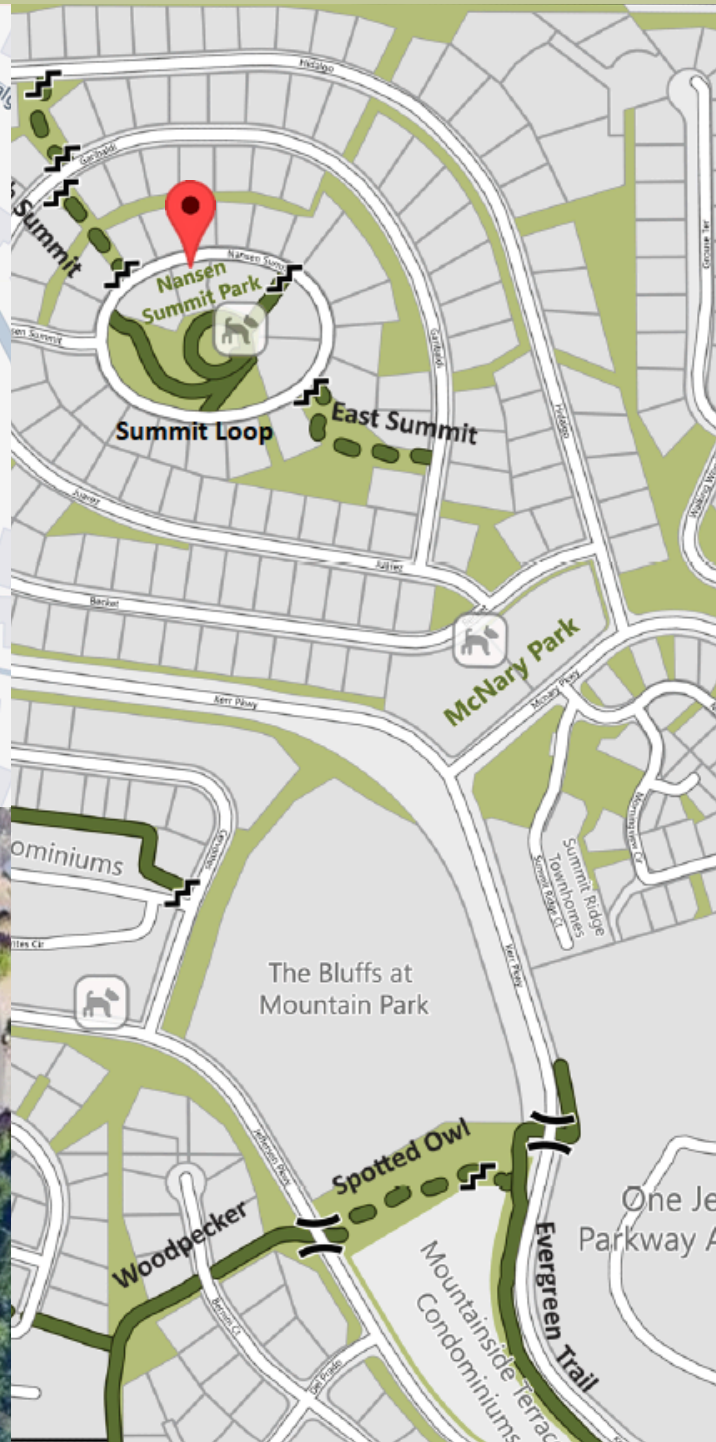
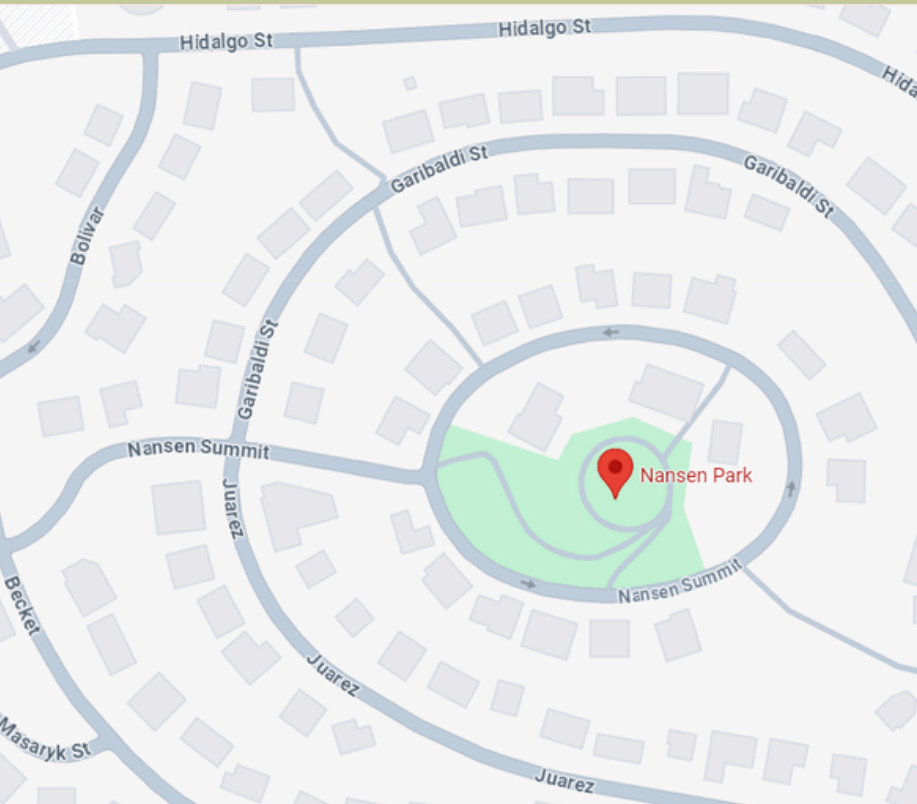
~ courtesy of Mountain Park HOA



Nansen Summit Park

“At the top of the summit is the ancient volcano of the Boring Lava Field, Mount Sylvania, and the highest point in Lake Oswego at an elevation of 975 feet. This park offers a grassy area, benches, ornamental and native plantings, a weather station, and a 360 degree sweeping view of the landscape with views of the Tualatin River Valley and the West Hills.”

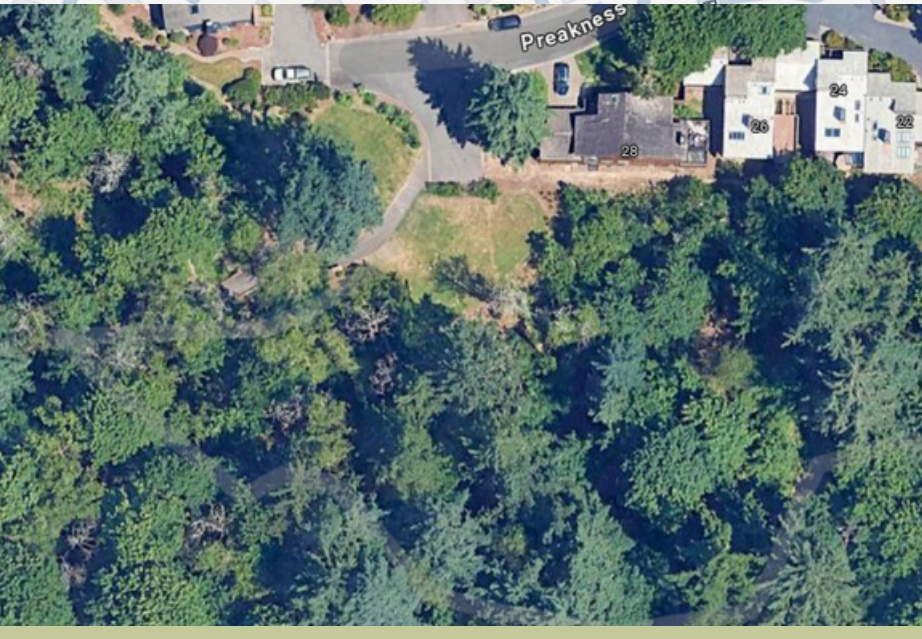
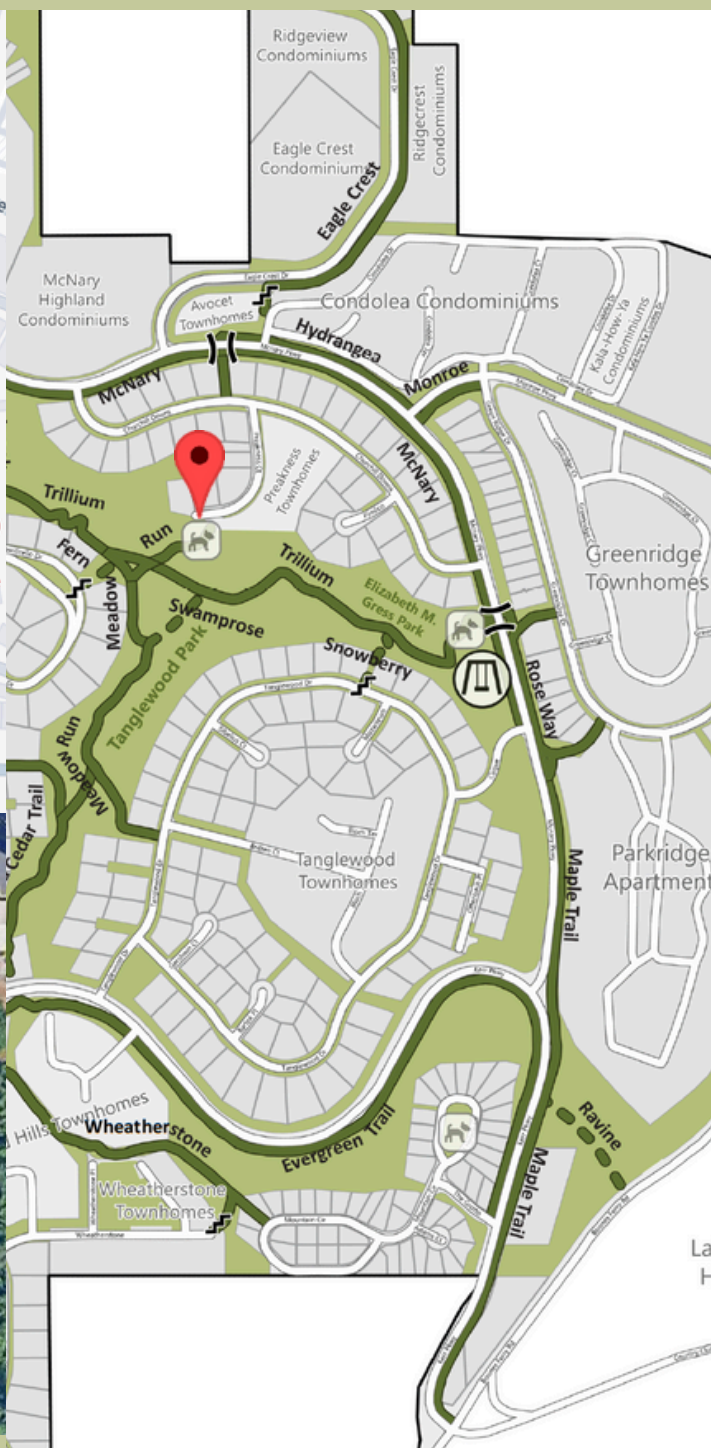
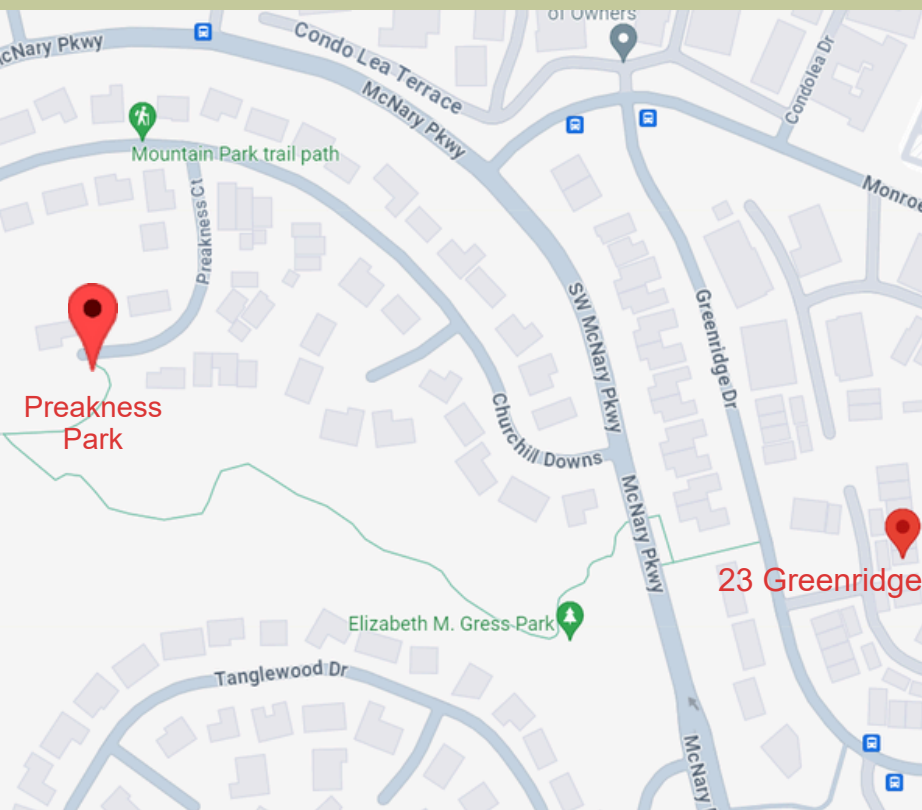
~ courtesy of Mountain Park HOA



Preakness Park

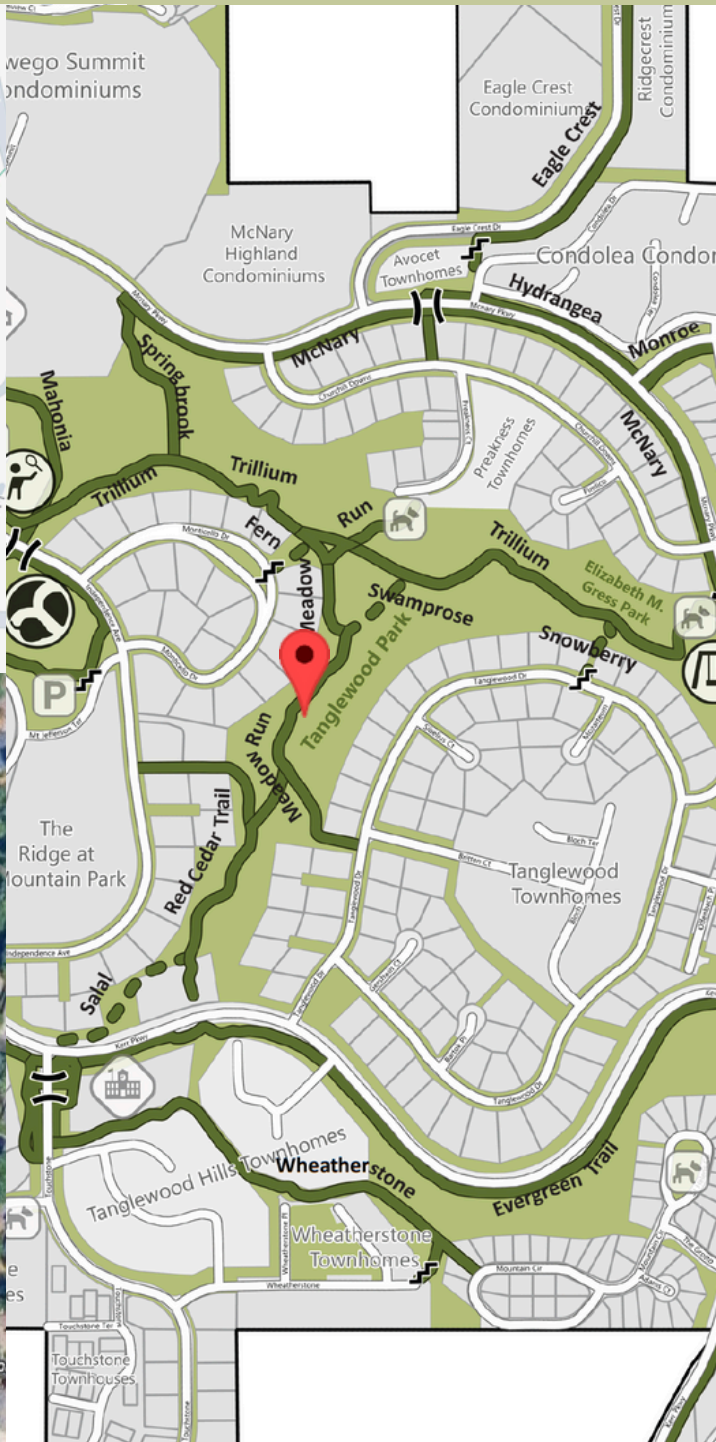
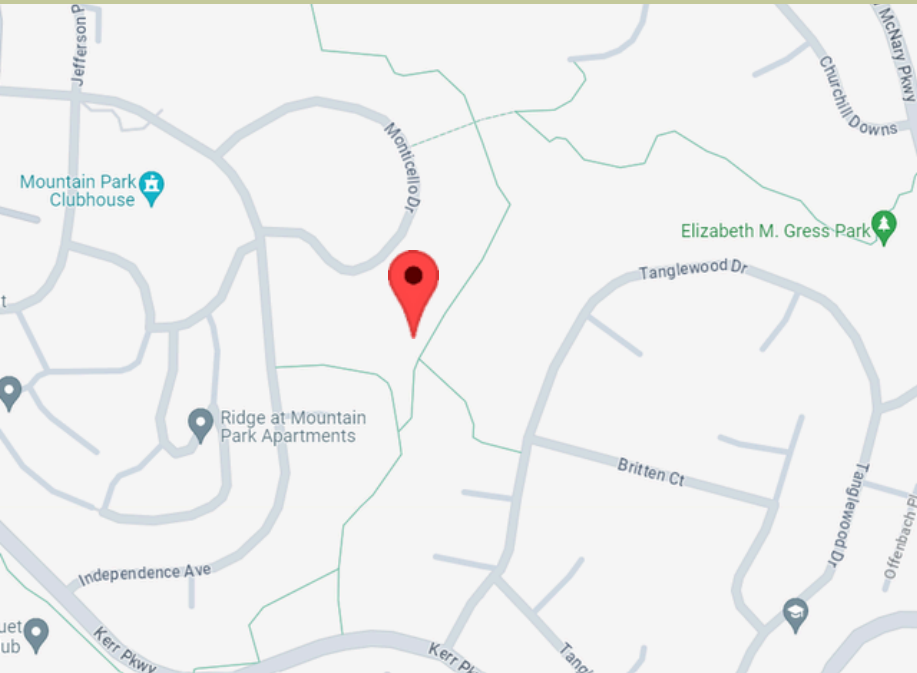
"A quiet neighborhood park recently renovated. Tucked behind Preakness Court, this park features a brand new natural playground, gardens, a few benches, a small grassy area, stone bridges crossing Springbrook Creek and Monticello Tributary...Preakness Park is a main entry point to the Tanglewood Park Trail System located just off of Churchill Downs and accessed via McNary Parkway."

~ courtesy of Mountain Park HOA



Tanglewood Park

“This park is the largest contiguous greenspace in Mountain Park and the site of an ongoing restoration and stormwater management system along Independence Tributary which leads into Springbrook Creek. Large bigleaf maples provide dappled shade, benches are available, and the trails lead to Gress Park, the Kerr Reservoir, Mountain Park Clubhouse and Gutman Park, as well as, Preakness Park.”
~ courtesy of Mountain Park HOA



Touchstone Park

"The second largest open space in Mountain Park is located at the southern tip of "Nature's Neighborhood". It is bordered by Touchstone, Hotspur, and Othello, and offers benches, a large grassy area, and a children's play structure. The park also has large trees which provide shade around the walking trails."

~ courtesy of Mountain Park HOA

